

GMCL1 Antibody (Center)
Purified Rabbit Polyclonal Antibody (Pab)
Catalog # AP21774c**Specification**

GMCL1 Antibody (Center) - Product Information

Application	WB, IHC-P,E
Primary Accession	Q96IK5
Reactivity	Human, Mouse
Host	Rabbit
Clonality	polyclonal
Isotype	Rabbit IgG
Calculated MW	58685

GMCL1 Antibody (Center) - Additional Information**Gene ID** 64395**Other Names**

Germ cell-less protein-like 1, GMCL1, GCL

Target/Specificity

This GMCL1 antibody is generated from a rabbit immunized with a KLH conjugated synthetic peptide between 281-315 amino acids from the Central region of human GMCL1.

Dilution

WB~~1:2000

IHC-P~~1:25

E~~Use at an assay dependent concentration.

Format

Purified polyclonal antibody supplied in PBS with 0.09% (W/V) sodium azide. This antibody is purified through a protein A column, followed by peptide affinity purification.

Storage

Maintain refrigerated at 2-8°C for up to 2 weeks. For long term storage store at -20°C in small aliquots to prevent freeze-thaw cycles.

Precautions

GMCL1 Antibody (Center) is for research use only and not for use in diagnostic or therapeutic procedures.

GMCL1 Antibody (Center) - Protein Information**Name** GMCL1**Synonyms** BTBD13, GCL, SPATA29

Function Possible function in spermatogenesis. Enhances the degradation of MDM2 and increases the amount of p53 probably by modulating the nucleocytoplasmic transport (By similarity).

Cellular Location

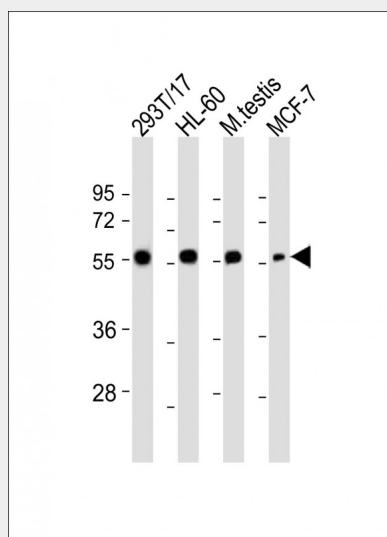
Nucleus matrix.

GMCL1 Antibody (Center) - Protocols

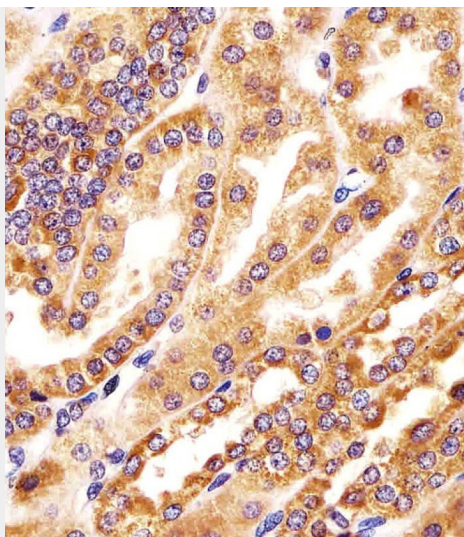
Provided below are standard protocols that you may find useful for product applications.

- [Western Blot](#)
- [Blocking Peptides](#)
- [Dot Blot](#)
- [Immunohistochemistry](#)
- [Immunofluorescence](#)
- [Immunoprecipitation](#)
- [Flow Cytometry](#)
- [Cell Culture](#)

GMCL1 Antibody (Center) - Images



All lanes : Anti-GMCL1 Antibody (Center) at 1:2000 dilution Lane 1: 293T/17 whole cell lysate Lane 2: HL-60 whole cell lysate Lane 3: mouse testis lysate Lane 4: MCF-7 whole cell lysate Lysates/proteins at 20 µg per lane. Secondary Goat Anti-Rabbit IgG, (H+L), Peroxidase conjugated at 1/10000 dilution. Predicted band size : 59 kDa Blocking/Dilution buffer: 5% NFDM/TBST.



AP21774c staining GMCL1 in human kidney tissue sections by Immunohistochemistry (IHC-P - paraformaldehyde-fixed, paraffin-embedded sections). Tissue was fixed with formaldehyde and blocked with 3% BSA for 0.5 hour at room temperature; antigen retrieval was by heat mediation with a citrate buffer (pH6). Samples were incubated with primary antibody (1/25) for 1 hour at 37°C. A undiluted biotinylated goat polyvalent antibody was used as the secondary antibody.

GMCL1 Antibody (Center) - Background

Possible function in spermatogenesis. Enhances the degradation of MDM2 and increases the amount of p53 probably by modulating the nucleocytoplasmic transport (By similarity).

GMCL1 Antibody (Center) - References

Ota T., et al. Nat. Genet. 36:40-45(2004).
Holaska J.M., et al. J. Biol. Chem. 278:6969-6975(2003).